



Quick Guide

for GSM/LTE, RFID and WIFI Antennas



www.poynting.tech

XPOL - 1



Frequency:	790-960, 1710-2700 MHz
Max Gain:	4dBi - Omni Directional (2x2 MIMO)
Polarisation:	+45° and -45°
Size (LxWxD):	215mm x 135mm x 85mm

XPOL - 2



Frequency:	698-2700 MHz
Max Gain:	9dBi - Directional (2x2 MIMO)
Polarisation:	Vertical & Horizontal
Size (LxWxD):	255mm x 250mm x 80mm

XPOL - 6 - 10m



Frequency:	1710-2700 MHz
Max Gain:	11dBi - Directional (2x2 MIMO)
Polarisation:	+45° and -45°
Size (LxWxD):	300mm x 145mm x 57mm

XPOL - 13



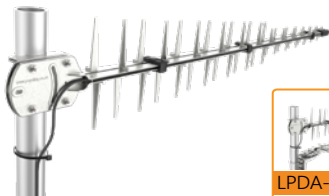
Frequency:	3400-3800 MHz
Max Gain:	10.5dBi - Directional (2x2 MIMO)
Polarisation:	+90° and -90°
Size (LxWxD):	215mm x 135mm x 85mm

XPOL - 16



Frequency:	450-470, 790-860, 1710-2170 MHz
Max Gain:	8dBi - Directional (2x2 MIMO)
Polarisation:	+45° and -45°
Size (LxWxD):	350mm x 350mm x 90mm

LPDA - 92



Frequency:	698-3000 MHz
Max Gain:	12dBi - Directional (SISO)
Polarisation:	Linear - BRKT 30 for Horizontal
Size (LxWxD):	1100mm x 180mm x 60mm

OMNI - 39



M2M

Frequency:	790-960, 1710-2700 MHz
Max Gain:	2.3dBi - Omni Directional
Polarisation:	Linear Vertical
Size (LxWxD):	150mm x 60mm x 40mm

To be released
February 2018

OMNI - 280



M2M

Frequency:	698-960, 1710-2700 MHz
Max Gain:	2dBi - Omni Directional
Polarisation:	Linear Vertical
Size (LxWxD):	150mm x 60mm x 40mm

OMNI - 85



M2M

Frequency:	790 - 2700 MHz
Max Gain:	6dBi - Omni Directional
Polarisation:	Linear Vertical
Size (LxWxD):	210mm x 20mm x 14mm

OMNI - 232



M2M

Frequency:	795-960, 1710-2170, 2300-2400, 2500-2700 MHz
Max Gain:	5dBi - Omni Directional
Polarisation:	Linear Vertical
Size (LxWxD):	102mm x 32mm

OMNI - 69



M2M

Frequency:	790-960, 1710-2700 MHz
Max Gain:	7dBi - Omni Directional
Polarisation:	Linear Vertical
Size (LxWxD):	485mm x 75mm x 75mm

OMNI - 121



M2M

Frequency:	690-960, 1710-2170, 2500-2600 MHz
Max Gain:	6dBi - Omni Directional
Polarisation:	Linear Vertical
Size (LxWxD):	555mm x 50mm x 50mm

OMNI - 275



Frequency:	452-468 , 790-960, 1710-2700 MHz
Max Gain:	7dBi - Omni Directional
Polarisation:	Linear Vertical
Size (LxWxD):	485mm x 75mm x 75mm

OMNI - 291



Frequency:	450-470 , 690-960, 1710-2700 MHz
Max Gain:	7dBi - Omni Directional
Polarisation:	Linear Vertical
Size (LxWxD):	560mm x 75mm

MIMO - 1



5-in-1 Antenna	2x LTE; 2x Wi-Fi (Dual Band); 1x GPS
Frequency:	698-960, 1710-2700, 5000-6000 MHz
Max Gain:	6.5dBi - Omni Directional (2x2 MIMO)
Polarisation:	Linear Vertical
Size (LxWxD):	252mm x 127mm x 55mm

MIMO - 1 - 1



2-in-1 Antenna	2x LTE
Frequency:	698-960, 1710-2700 MHz
Max Gain:	4.5dBi - Omni Directional (2x2 MIMO)
Polarisation:	Linear Vertical x 2
Size (LxWxD):	252mm x 172mm x 55mm

MIMO - 1 - 2



3-in-1 Antenna	2x LTE; 1x GPS
Frequency:	690-960, 1710-2700 MHz
Max Gain:	4.5dBi - Omni Directional (2x2 MIMO)
Polarisation:	Linear Vertical x 2
Size (LxWxD):	252mm x 172mm x 55mm

Release Date TBC

MIMO - 3



5-in-1 Antenna	2x LTE; 1x GPS; 2x Wi-Fi (Dual Band)
Frequency:	450-470, 698-960, 1710-2700, 5000-6000 MHz
Max Gain:	6.5dBi - Omni Directional (2x2 MIMO)
Polarisation:	Linear Vertical
Size (LxWxD):	252mm x 134mm x 120mm

Release Date TBC

MIMO - 3 - 1



2-in-1 Antenna	2x LTE
Frequency:	450-470, 698-960, 1710-2700 MHz
Max Gain:	4.5dBi - Omni Directional (2x2 MIMO)
Polarisation:	Linear Vertical
Size (LxWxD):	252mm x 134mm x 120mm

Release Date TBC

MIMO - 3 - 2



3-in-1 Antenna	2x LTE; 1x GPS
Frequency:	450-470, 698-960, 1710-2700 MHz
Max Gain:	4.5dBi - Omni Directional (2x2 MIMO)
Polarisation:	Linear Vertical
Size (LxWxD):	252mm x 134mm x 120mm

GPS - 1



GPS 

GPS Antenna	GPS/Glonass L1 & L2
Frequency:	1565-1610, 1217-1250 MHz
Max Gain:	21dBi - Omni Directional
Polarisation:	RHCP
Size:	Ø 98mm x 32mm

Intrinsically safe option available

HELI - 3



Helical Antenna	Mining & Tunnels
Frequency:	2400 - 2500 MHz
Max Gain:	17.5dBi - Directional
Polarisation:	Right hand circular
Size (LxWxD):	1050mm x 150mm x 120mm

Intrinsically safe option available

HELI - 4



Helical Antenna	Mining & Tunnels
Frequency:	2400 - 2500 MHz
Max Gain:	15dBi - Directional
Polarisation:	Right hand Circular
Size (LxWxD):	405mm x 110mm x 130mm

Intrinsically safe option available

HELI - 8



Helical Antenna	Mining & Tunnels
Frequency:	2400 - 2500 MHz
Max Gain:	14dBi - Bi Directional
Polarisation:	Right hand Circular
Size (LxWxD):	2050mm x 140mm x 140mm

To be released
February 2018

OMNI - 281



Frequency:	2400-2500, 5000-6000 MHz
Max Gain:	4.5dBi - Omni Directional (SISO)
Polarisation:	Linear Vertical
Size (LxWxD):	150mm x 60mm x 40mm

Intrinsically safe
option available

OMNI - 50



Frequency:	2400-2500 MHz
Max Gain:	8.5dBi - Omni Directional
Polarisation:	Vertical
Size (LxWxD):	570mm x 50mm x 50mm

OMNI - 296



Frequency:	2400-2500, 3300-3800, 5000-6000 MHz
Max Gain:	7.5dBi - Omni Directional (SISO)
Polarisation:	Linear Vertical
Size (LxWxD):	485mm x 75mm x 75mm

WIFI

WLAN - 60



Frequency:	2400-2500, 3300-3800 & 5000-6000 MHz
Max Gain:	18dBi - Directional (SISO)
Polarisation:	Linear Vertical
Size (LxWxD):	240mm x 240mm x 60mm

WLAN - 61



Frequency:	2400-2500 & 5000-6000 MHz
Max Gain:	11dBi - Directional (4X4 MIMO)
Polarisation:	Vertical & Horizontally, +45° & -45°
Size (LxWxD):	240mm x 240mm x 60mm

PATCH - 25



Frequency:	860 - 960 MHz
Max Gain:	8.75dBi - Directional
Polarisation:	Right Hand Circular
Size (LxWxD):	250mm x 250mm x 40mm

PATCH - 26



Frequency:	820 - 970 MHz
Max Gain:	8dBi - Directional
Polarisation:	Linear
Size (LxWxD):	250mm x 250mm x 40mm

BRKT - 39



**Heavy Duty Stainless Steel Marine Mount Antenna Bracket
1"-141**

for OMNI 291

BRKT - 38



**Heavy Duty Stainless Steel Marine Ratchet
Rail Mount Antenna Bracket**

for OMNI 291

BRKT - 37



**Heavy Duty Stainless Steel Marine Flat Mount Antenna
Bracket 1"-141**

for OMNI 291

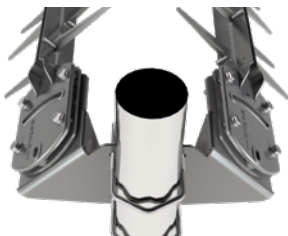
BRKT - 30



LPDA 92 LTE Horizontal Mounting Bracket

for 2 x LPDA 92

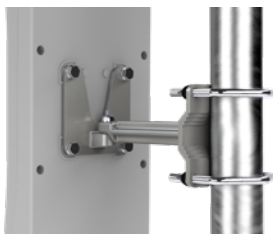
BRKT - 33



±45° Polarisation Bracket

for LPDA 92

BRKT - 16



Universal Cast Swivel Bracket

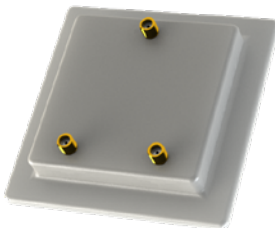
for XPOL 6-10m, PATCH 25 & PATCH 26

ADPT - 24



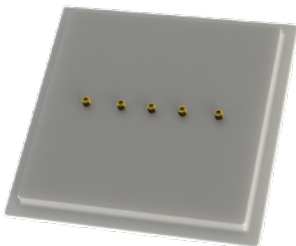
Universal Cellphone Adaptor	
Frequency:	698-960, 1710-2700 MHz
Size (LxWxD):	80mm x 45mm x 15mm

SPLT - 14



Cellular 2-Way Splitter	
Frequency:	628-2700 MHz
Size (LxWxD):	90mm x 90mm x 15mm

SPLT - 13



Cellular 4-Way Splitter	
Frequency:	690-960, 1710-1880 MHz
Size (LxWxD):	150mm x 165mm x 20mm

CAB - 118, 119, 124



RP SMA



SMA Female



SMA Male

LMR195 - Fire-Resistant Extension cables for MIMO

CAB 118 - 5 x 5m Extension cables

For vehicle intergration on mobility antennas

CAB 119 - 5 x 3m Extension cables

For vehicle intergration on mobility antennas

CAB 124 - 5 x 1.5m Extension cables

For vehicle intergration on mobility antennas

CAB - 121, 122, 123



SMA Female



FAKRA



FAKRA



FAKRA

LMR195 - FR Extension cables (FAKRA) for MIMO

CAB 121 - CAB 118 - 5 x 5m Extension cables

For vehicle intergration on mobility antennas

CAB 122 - CAB 118 - 5 x 3m Extension cables

For vehicle intergration on mobility antennas

CAB 123 - CAB 118 - 5 x 1.5m Extension cables

For vehicle intergration on mobility antennas

South Africa

Unit 4, N1 Industrial Park
Landmarks Ave
Samrand, 0157,
South Africa
Tel: +27 12 657 0050
info@poynting.tech

Europe

Kronstadter Straße 4,
81677 München
Germany
Tel: +49 89 2080 265 38
Mob.: +49 176 529 733 50
sales-europe@poynting.tech